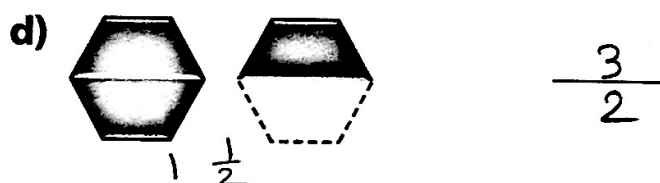
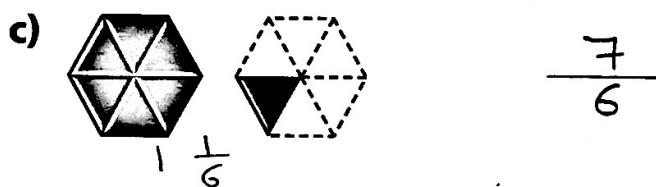
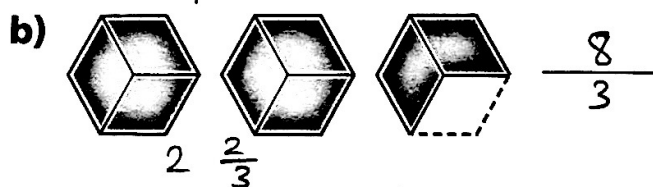
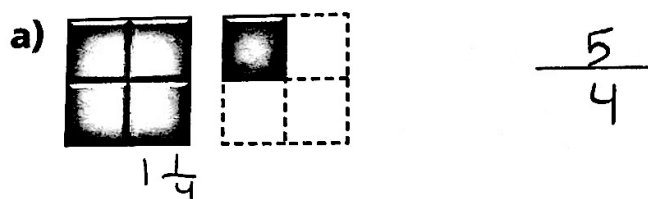


# Modelling Fractions

## GOAL

Model fractions equal to 1 or greater than 1.

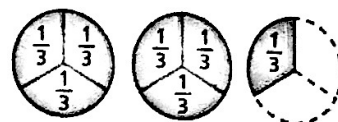
1. Write an improper fraction to represent each model.



## At-Home Help

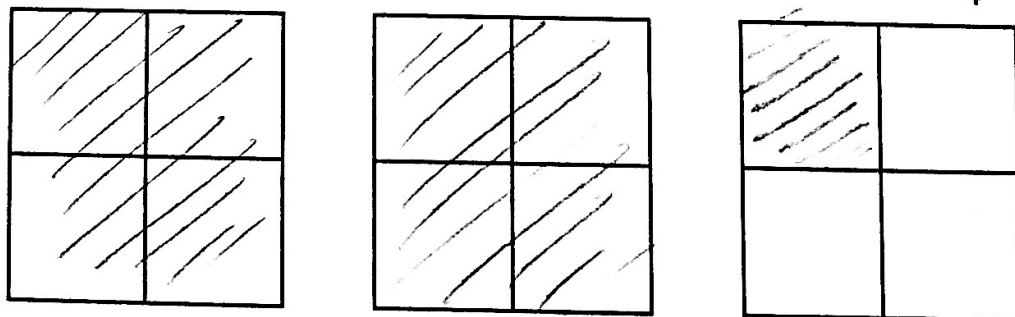
An **improper fraction** is a fraction with a numerator that is greater than its denominator.

For example,  $\frac{7}{3}$  is an improper fraction.



In this model, one circle represents one whole. Each whole has 3 parts. 7 parts are shaded to represent  $\frac{7}{3}$ .

2. Colour this model to represent the improper fraction  $\frac{9}{4}$ .



3. Tanya's family ordered two pizzas. Each pizza was divided into six parts. Tanya ate one piece of pizza.

Write an improper fraction to represent the amount of pizza left.  $\frac{11}{6}$